

CAFÉ CORNER PROJECT

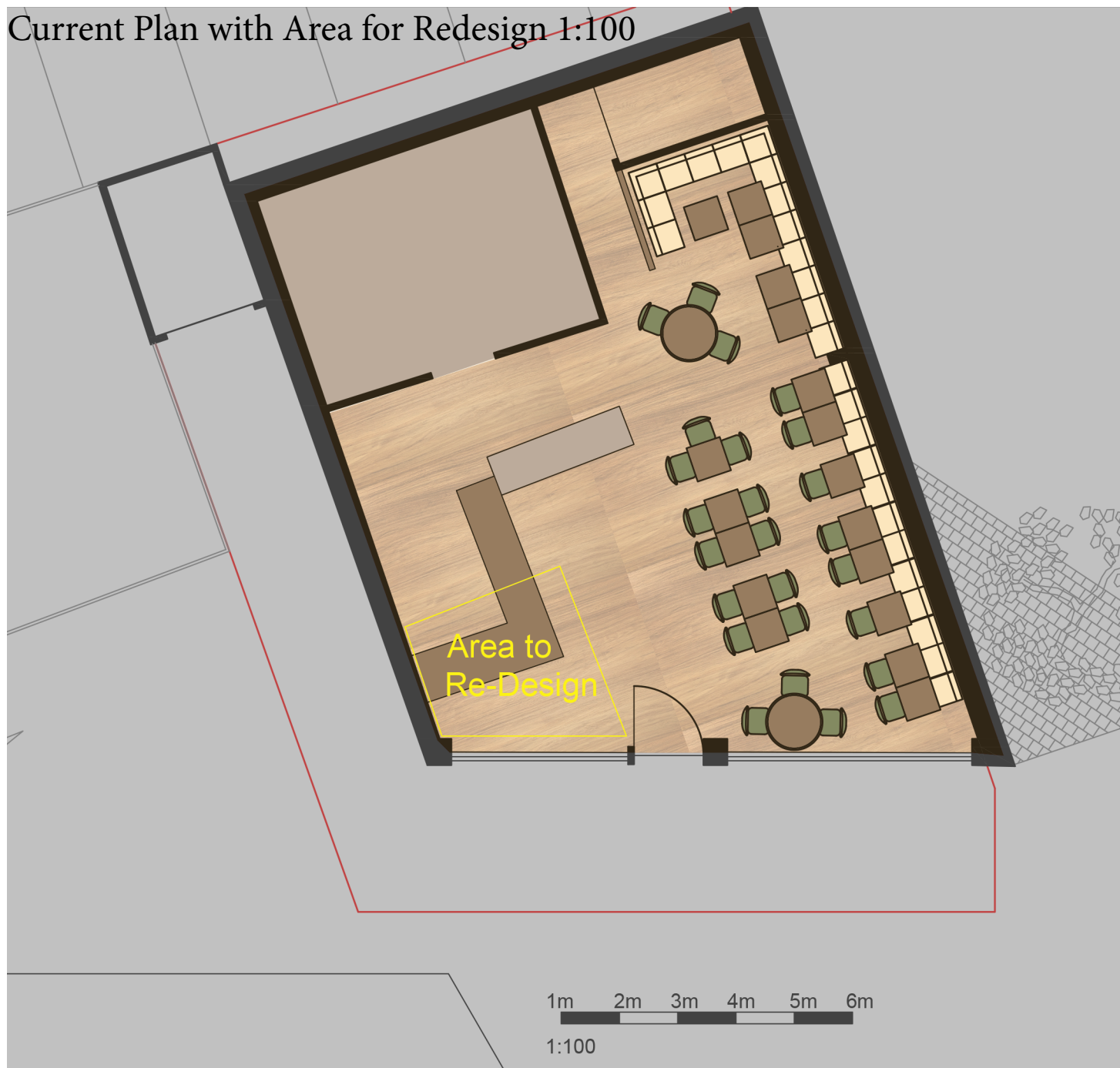
January 2023, Metchy's Café
Cardiff, UK

Project by Cameron Linden Green



Design Context & Brief

Current Plan with Area for Redesign 1:100



-What?

Metchy's Café is situated on the Cathays Terrace, and provides an excellent space for coffee, food, and other beverages, for all times of the day.

-Who?

The Café is frequented by people of all ages from Cardiff - from students, to families. It is a particularly popular place on days with sports fixtures in Cardiff such as rugby match days.

-Design Brief

Since the relaxation of COVID-19 guidelines, the direction and customer demand of Metchy's Café has changed - there is a need for greater seating space now an increasing number of people are growing more confident with socialising in such environments as cafés.

My task is to create a seating space out of an unused portion of the bar area, while keeping the same amount of space for drink bottles, and customer service.



Exterior



Area to Re-design



A general interior photograph

Existing Design Cues & Client Wishes

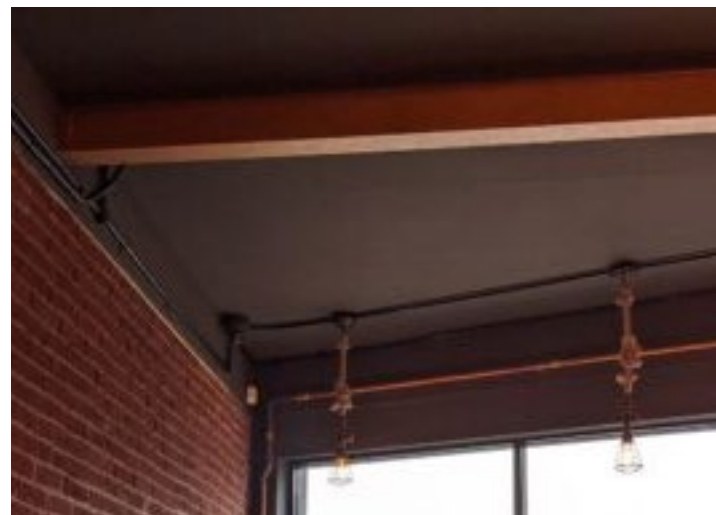


“Excellence without Extravagance”

There is a clear existing undercurrent of industrial, modern design, which clearly embodies the motto and ethos of the café.

Despite the establishment being situated in a small unit, the exposed steel frame gives a very open and spacious feeling to the space - it defies what one expects on the outside in a positive and welcoming way.

This spaciousness is currently slightly contradicted in the area which I have been tasked to redesign - however there is a great opportunity to perpetuate such an environment here.

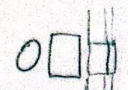


Design Idea Sketches & Initial Proposal

- METCHYS CAFE

Existing table layouts

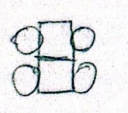
1. 2-person



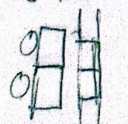
2. 3-person



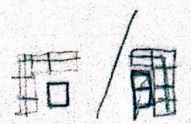
3. 4-person Free-standing



4. 4-person Anchored



5. 5-person Booth



- Tables can be joined to provide for groups of up to 10-12

KEY DESIGN CUES

- INDUSTRIAL, MODERN DESIGN

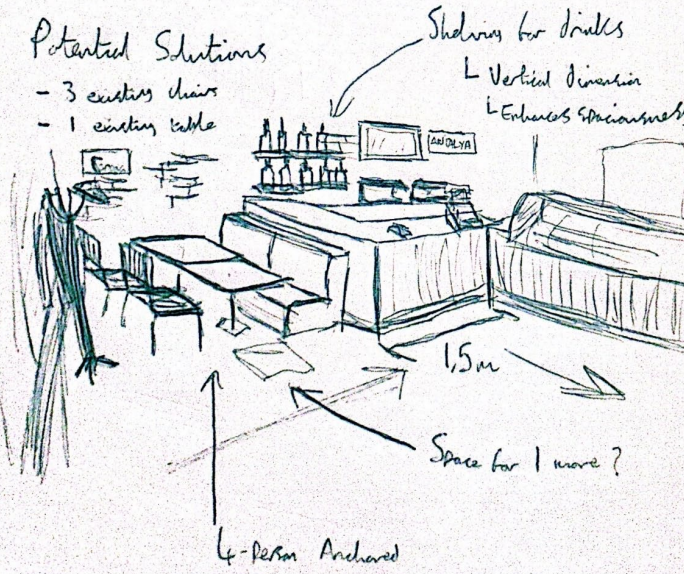
- OPEN, SPACIOUS

- WELCOMING

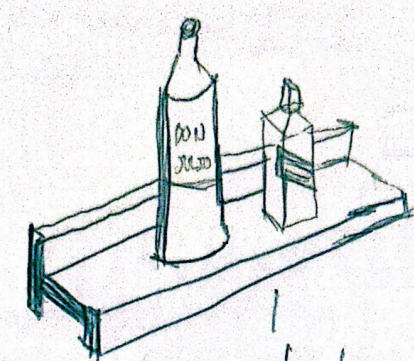
- ELEGANT, NOT EXTRAVAGANT

Potential Solutions

- 3 existing chairs
- 1 existing table



- SHELVING



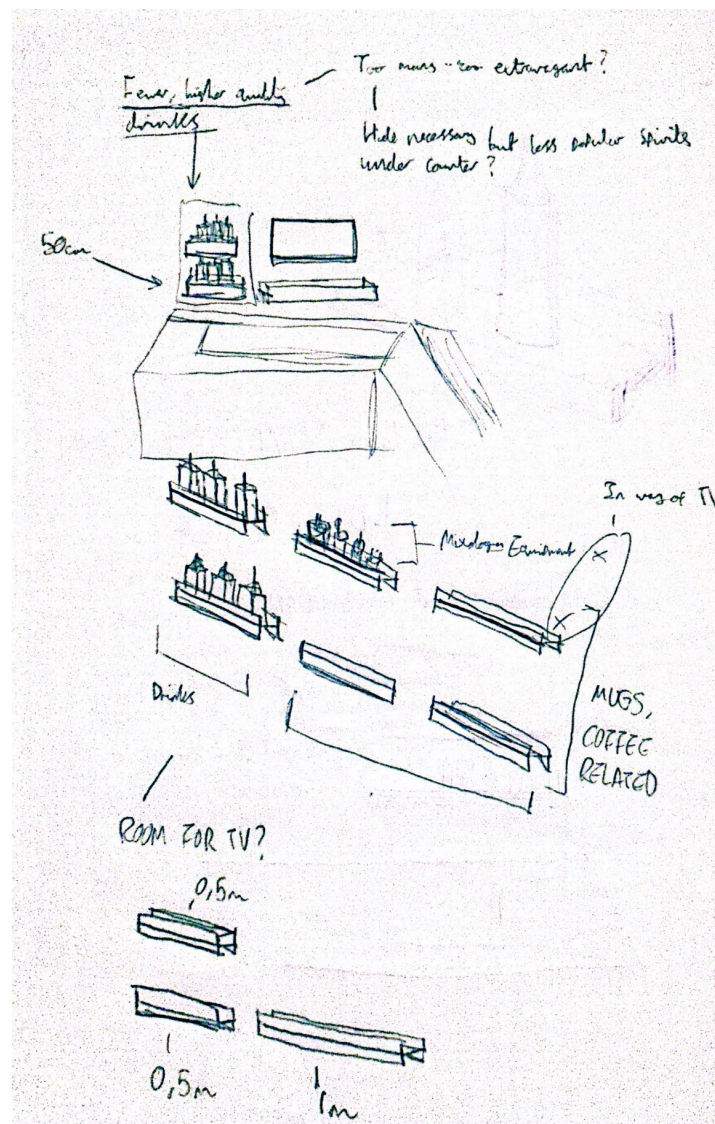
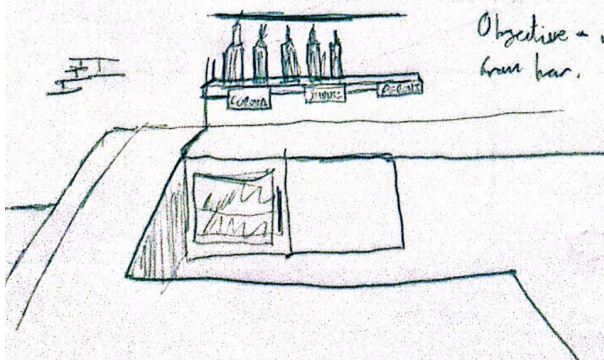
1m long SCRAP STEEL BEAM

Painted BRONZE

ELEGANT, not EXTRAVAGANT

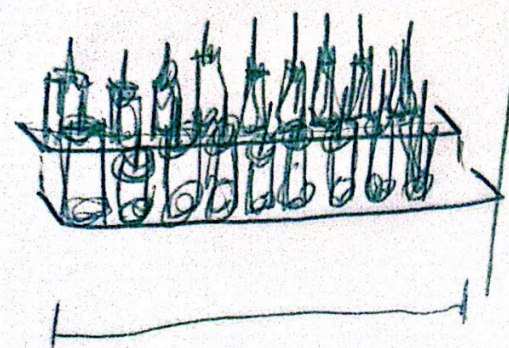
1m too long?

Objective - remove focus from bar. 85% CAFE



OVERALL RECOMMENDED CHANGES/SOLUTIONS:

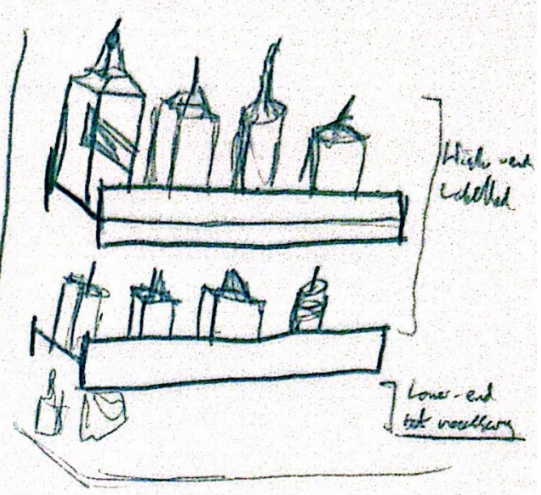
Instead of



1.0-1.5m?

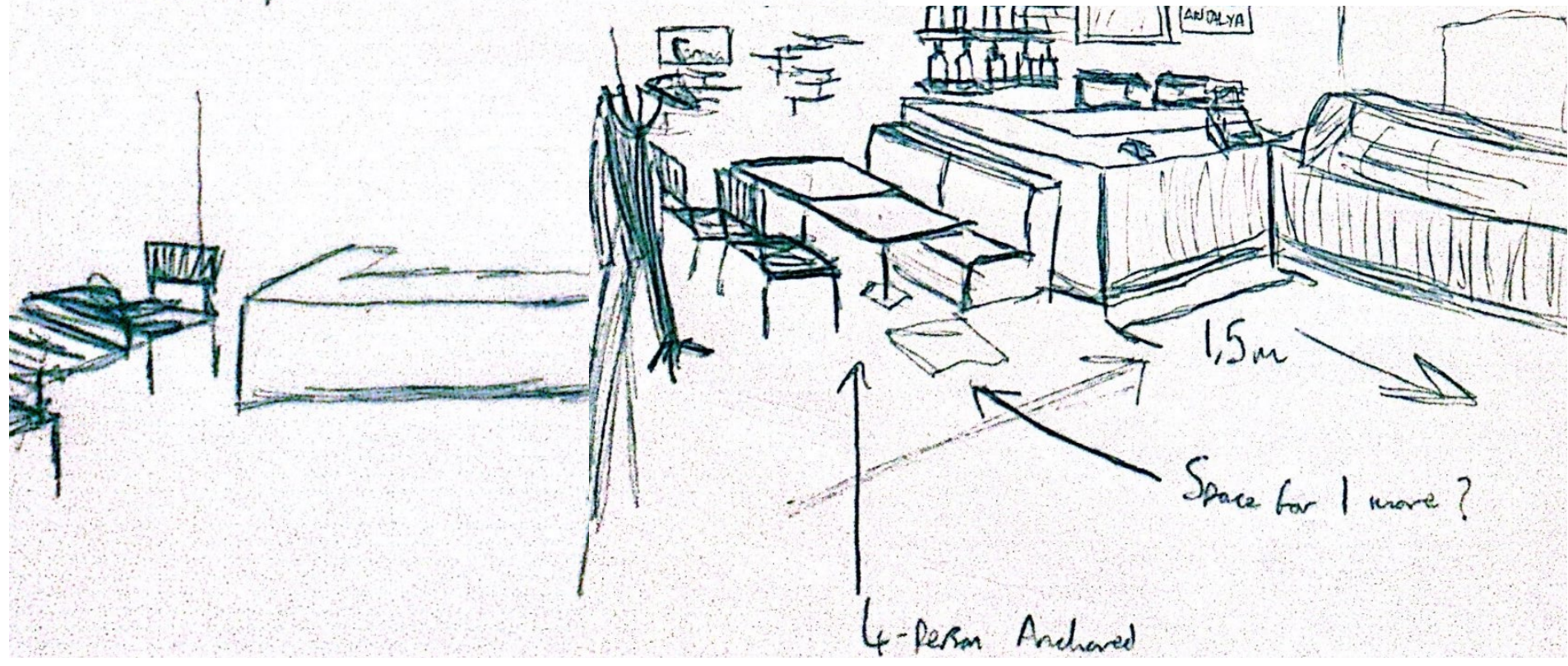
Messy, Lots of choice
Extravagant but overwhelming?

This



Elegant, Concise, Clean
Vertical, Spacious

Instead of,



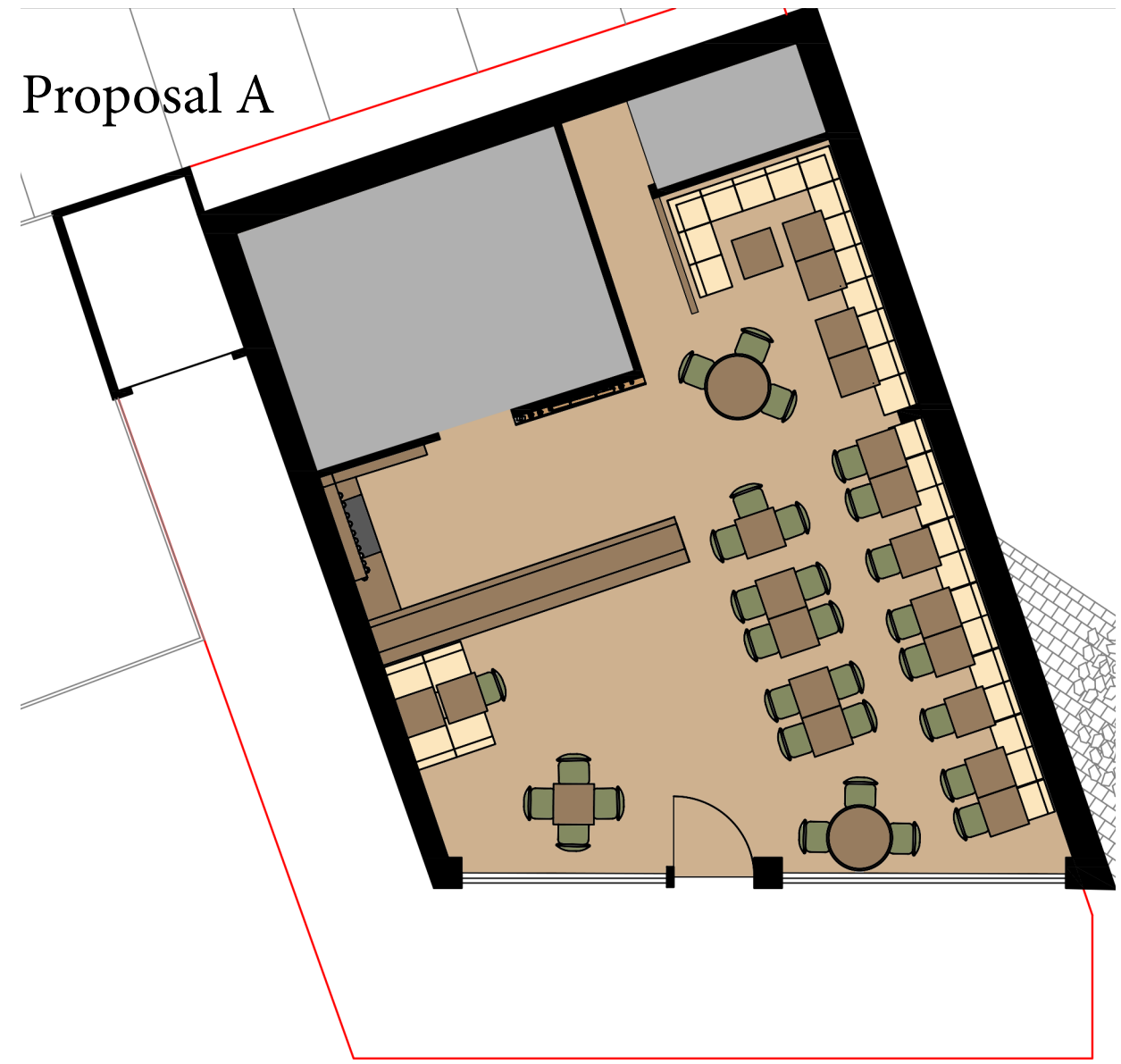
Client Feedback and Development

-My client wants to get rid of the display fridge - and replace it with the bar/ point of sale.

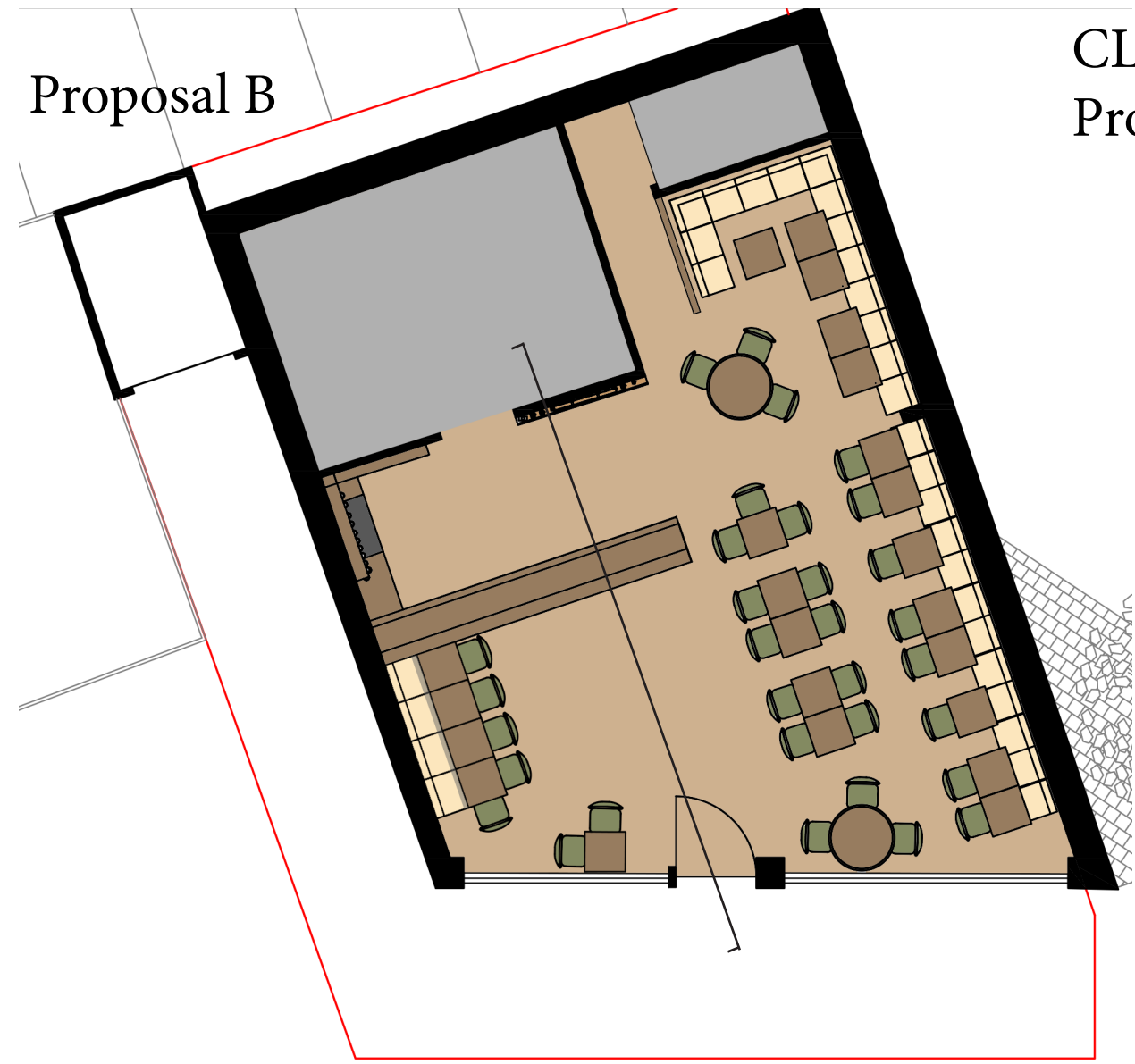
This increases the scope of my redevelopment, to a 27 square metre area of the café.



Proposals & Feedback



- Increased Occupancy = 9 (5+4)
+ Diner-style booth arrangement follows design intent
- Occupies more area, potential to feel cramped
 - Does not allow for variety of group sizes

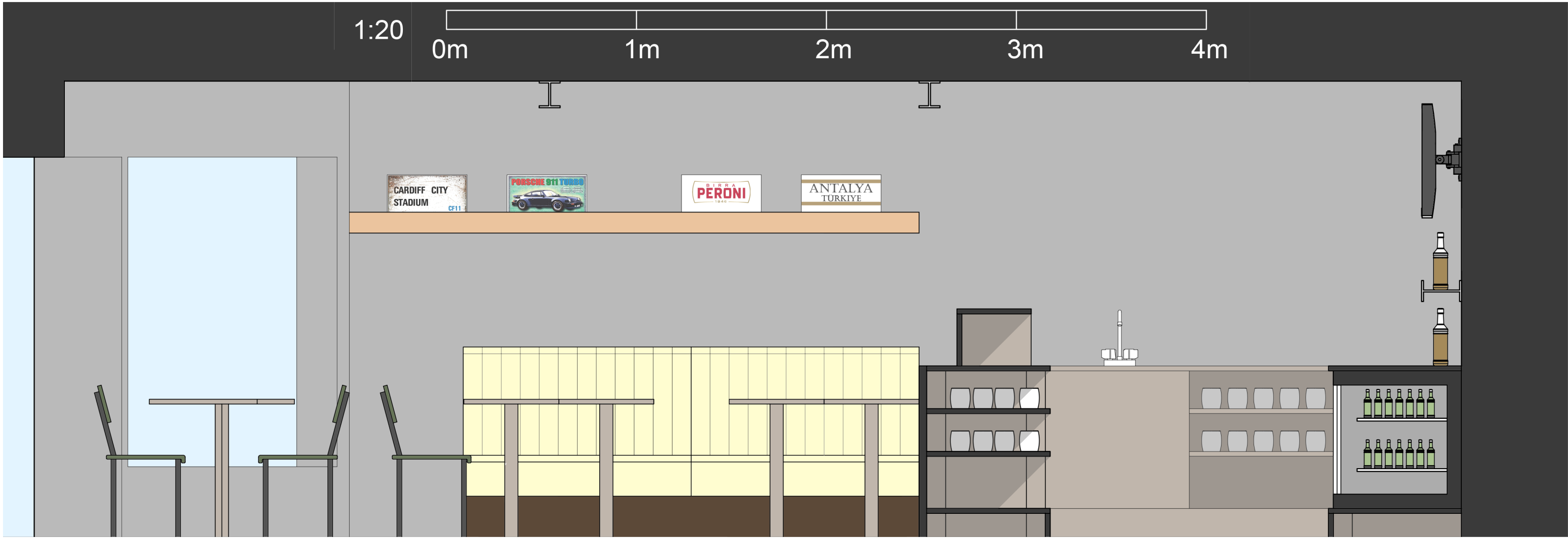


CLIENT CHOICE:
Proposal B

- Increased Occupancy = 11 (9+2)
+ Maximum occupancy of 9 on main table allows for group size variety
- + Increases sense of space while preserving cosy feel
 - Slightly loses diner-style influence

Proposal B - in Detail

Section



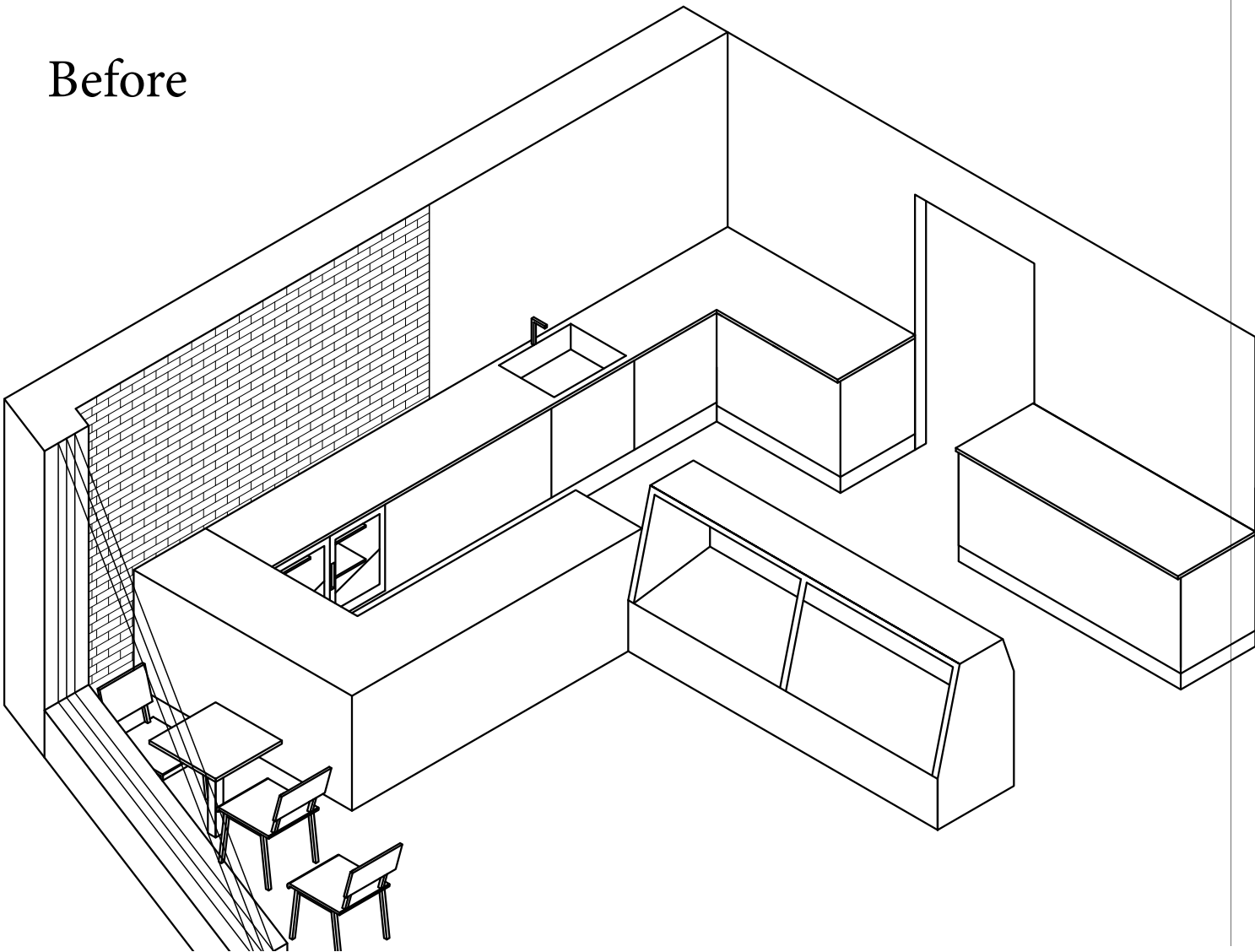
Renders



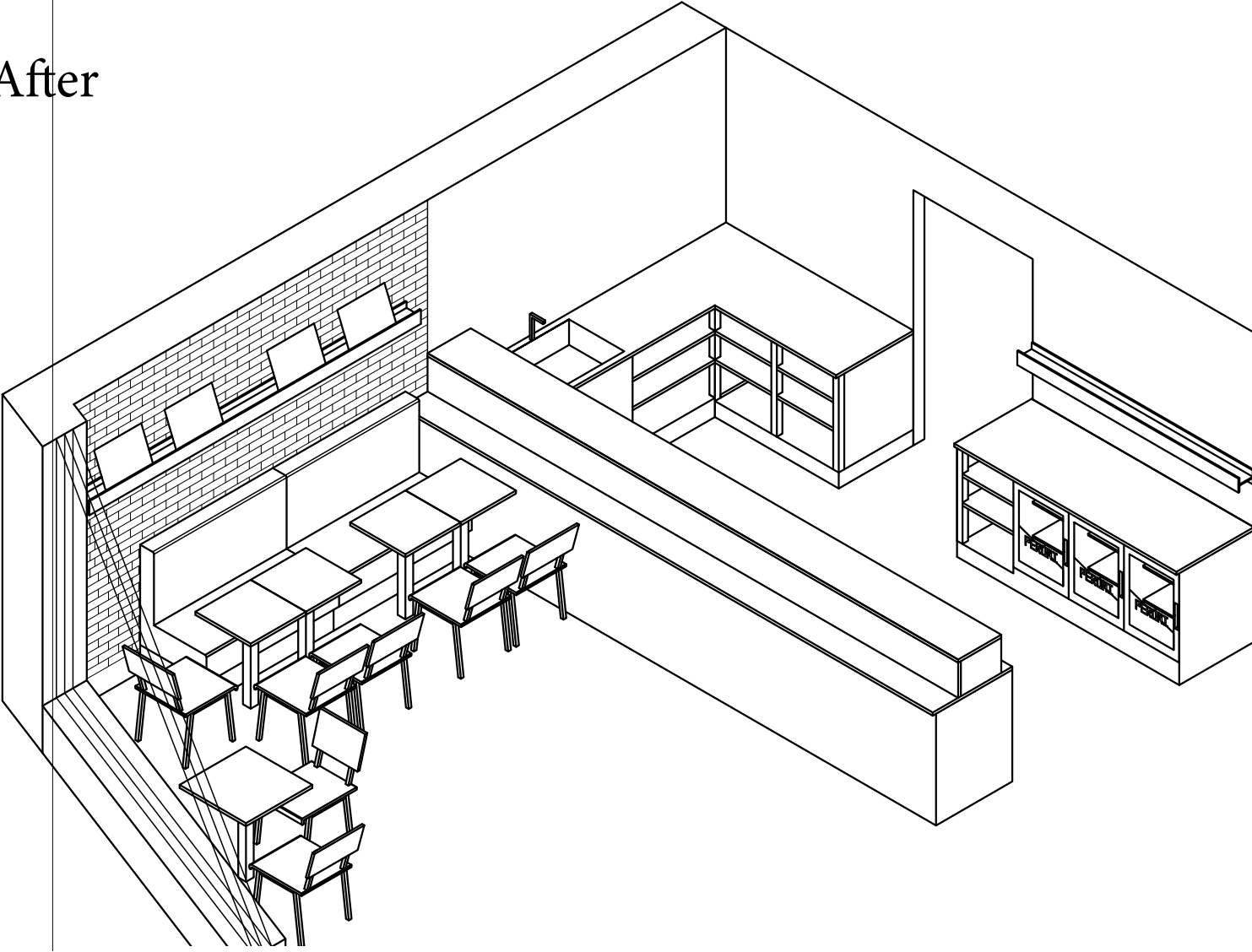
Final Drawings

Isometric 1:50 - Before & After

Before



After



Live Result Photographs

Coming soon, hopefully!